

Providing Navigation Services To Clients With Serious Mental Illness And Chronic Physical Health Conditions: Speaker Biographies

Alice Geis, DNP, PMH-NP, APN

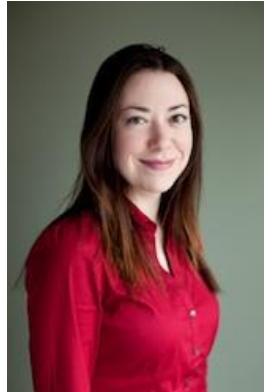
Director of Integrated Health, Trilogy Behavioral Healthcare



Dr. Alice Geis is the Director of Integrated Health at Trilogy Behavioral Healthcare, a community mental health center in Chicago. She is an Assistant Professor at Rush University, where she teaches in the master's and doctoral programs. She is board certified as a Psychiatric-Mental Health Nurse Practitioner, with doctoral preparation in Systems Leadership nursing. She has held a number of clinical, administrative, academic and consulting roles, including director of a hospital-based psychiatric home care program, member of a United Nations team investigating war crimes in the former Yugoslavia, and program development consultant.

Providing Navigation Services To Clients With Serious Mental Illness And Chronic Physical Health Conditions: Speaker Biographies

Kimberly Smathers, MBA
Managing Consultant, The Lewin Group



Kimberly Smathers has been employed by the Lewin Group, a healthcare and human services consulting firm, since May 2013 as a Federal Health and Human Services Managing Consultant. From 2008 to 2013, she was employed as Vice President of Business Development at Heartland Health Centers, a Chicago area federally qualified health center. Ms. Smathers leads efforts to support behavioral health organizations and providers in delivering behavioral health and other health services under the Technical Assistance to Support Providers in Providing Care to Medicare-Medicaid Enrollees contract with the Medicare-Medicaid Coordination Office at the Centers for Medicare & Medicaid Services.

Providing Navigation Services To Clients With Serious Mental Illness And Chronic Physical Health Conditions: Speaker Biographies

Laurie Carrier, MD
Medical Director, Heartland Health Centers



Dr. Laurie Carrier is a board certified family physician and psychiatrist, and has been employed by Heartland Health Centers since 2009. In 2012, she took on the role of Director of Behavioral Health and Integrated Care, and the following year, she became the medical site leader at two different integrated care locations. Dr. Carrier has also presented on topics regarding integrated care for the National Council, Substance Abuse and Mental Health Services Administration (SAMHSA), and the Association of Medicine and Psychiatry. As the Assistant Professor for Feinberg's School of Medicine's Department of Family and Community Medicine, Dr. Carrier works with residents further promoting the need for successful and comprehensive integrated care. She currently sees patients for both psychiatry and primary care at the Trilogy-Heartland Integrated Clinic.

Providing Navigation Services To Clients With Serious Mental Illness And Chronic Physical Health Conditions: Speaker Biographies

Thomas Thurlow, RN, MSN
Patient Navigator/Clinical Nurse, Trilogy Behavioral Healthcare



Thomas Thurlow is a community integrated health nurse at Trilogy Behavioral Healthcare and Rush University College of Nursing - Office of Faculty Practice. Thomas graduated with a Master's Degree in Nursing from Rush University. Thomas has worked on an assertive community treatment (ACT) team. During that time he created tools for tracking and monitoring a variety of health parameters for his caseload, including tracking coordination of care, referrals and educational needs. Currently, Thomas works as a clinic based integrated health nurse assisting with team consultations, triage of behavioral and physical health concerns, group education services, and coordination of care for clients.